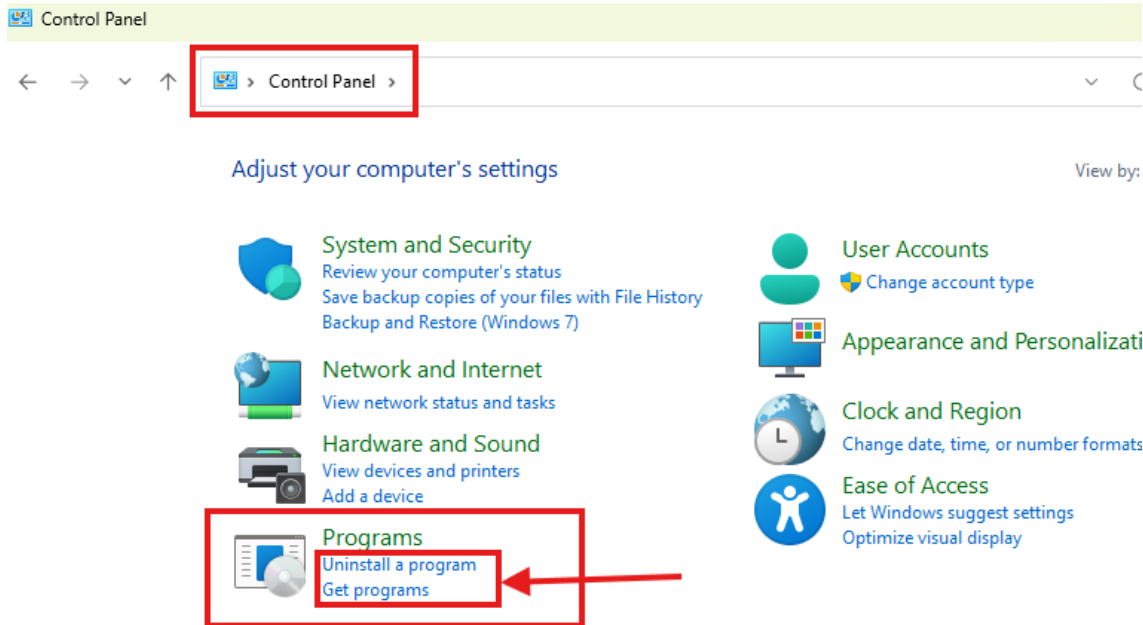


Steps for installation: Nest Trader 3.19.1.272

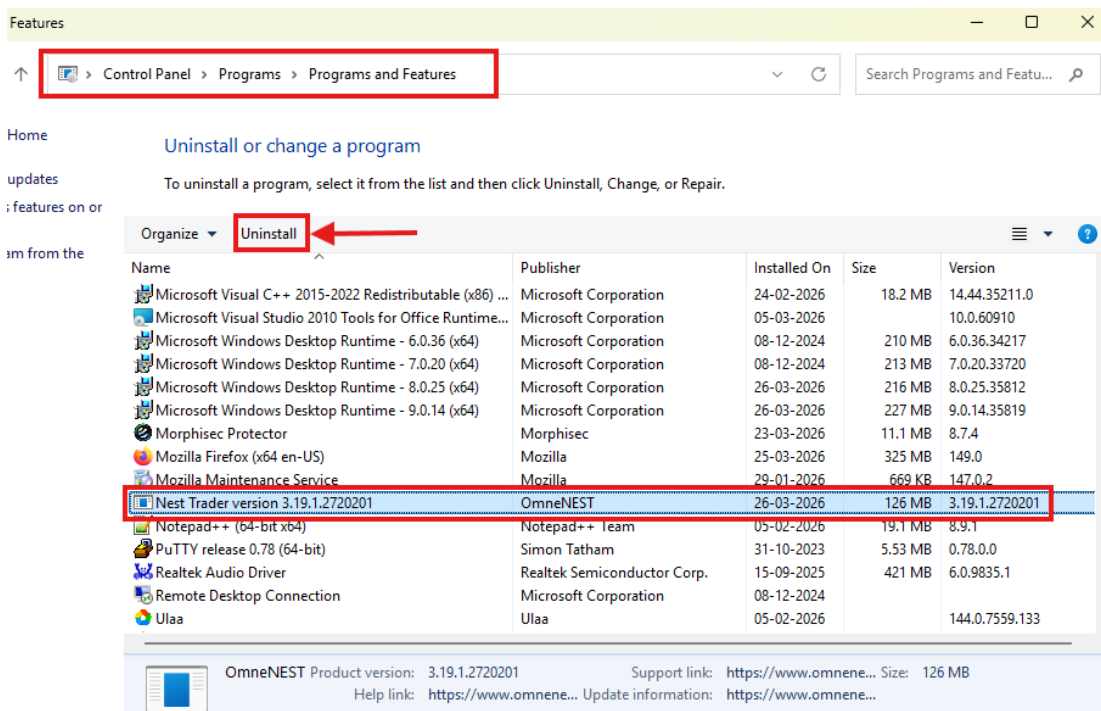
1. Uninstall the old NEST exe from **Add or Remove Programs** or the **Control Panel**.

Note: Without uninstalling the old exe, don't install new Version; otherwise, you're facing issues.

1. Go to **Control Panel** and select **Programs**. Click on **Uninstall a Program**.



2. Select **NEST Trader** from the list. Click **Uninstall** and follow the prompts to remove the NEST



3. Download nest 272 exe from below link

Client :

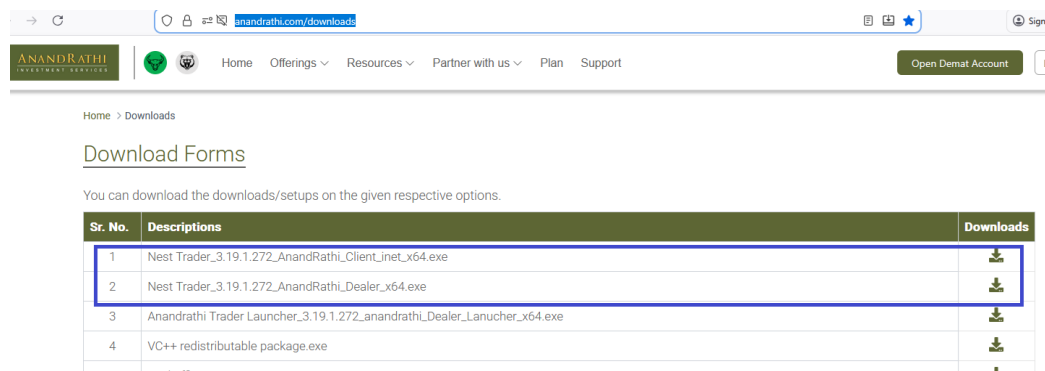
[https://anandrathi.com/download-setup/Nest Trader 3.19.1.272 AnandRathi Client inet x64.exe](https://anandrathi.com/download-setup/Nest%20Trader%203.19.1.272%20AnandRathi%20Client%20inet%20x64.exe)

Dealer :

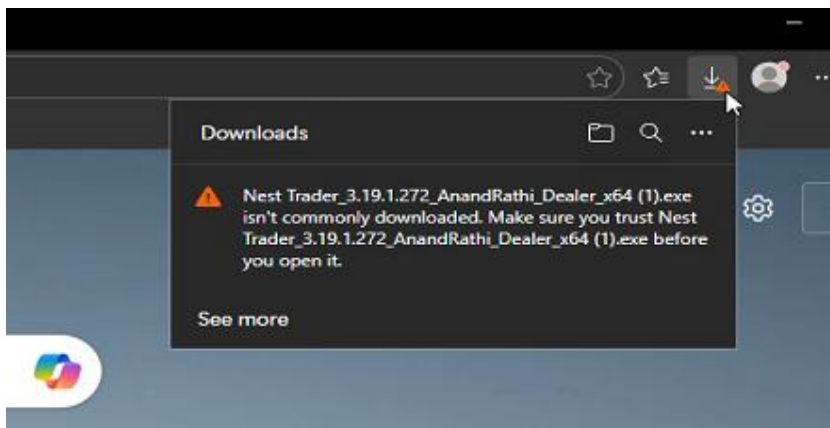
[https://app.anandrathi.com/Downloads/Online Trading/Nest%20Trader 3.19.1.268 anandrathi Dealer inet x64.exe](https://app.anandrathi.com/Downloads/Online%20Trading/Nest%20Trader%203.19.1.268%20anandrathi%20Dealer%20inet%20x64.exe)

or

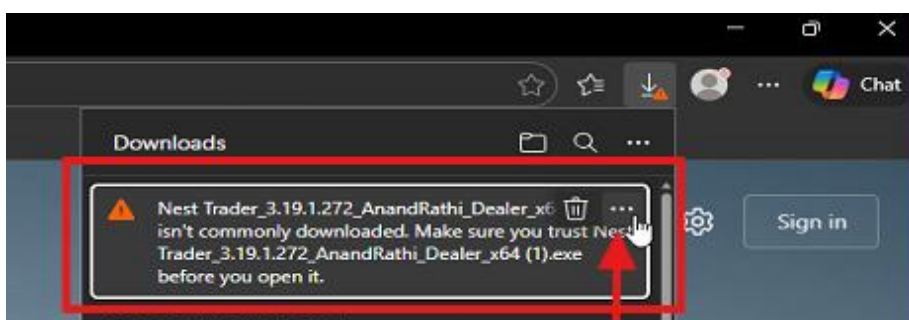
<https://anandrathi.com/downloads>



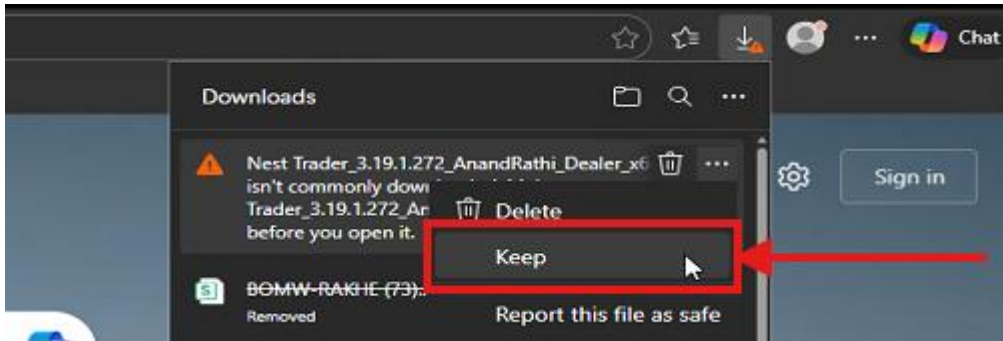
4. If you encounter a **download issue**,



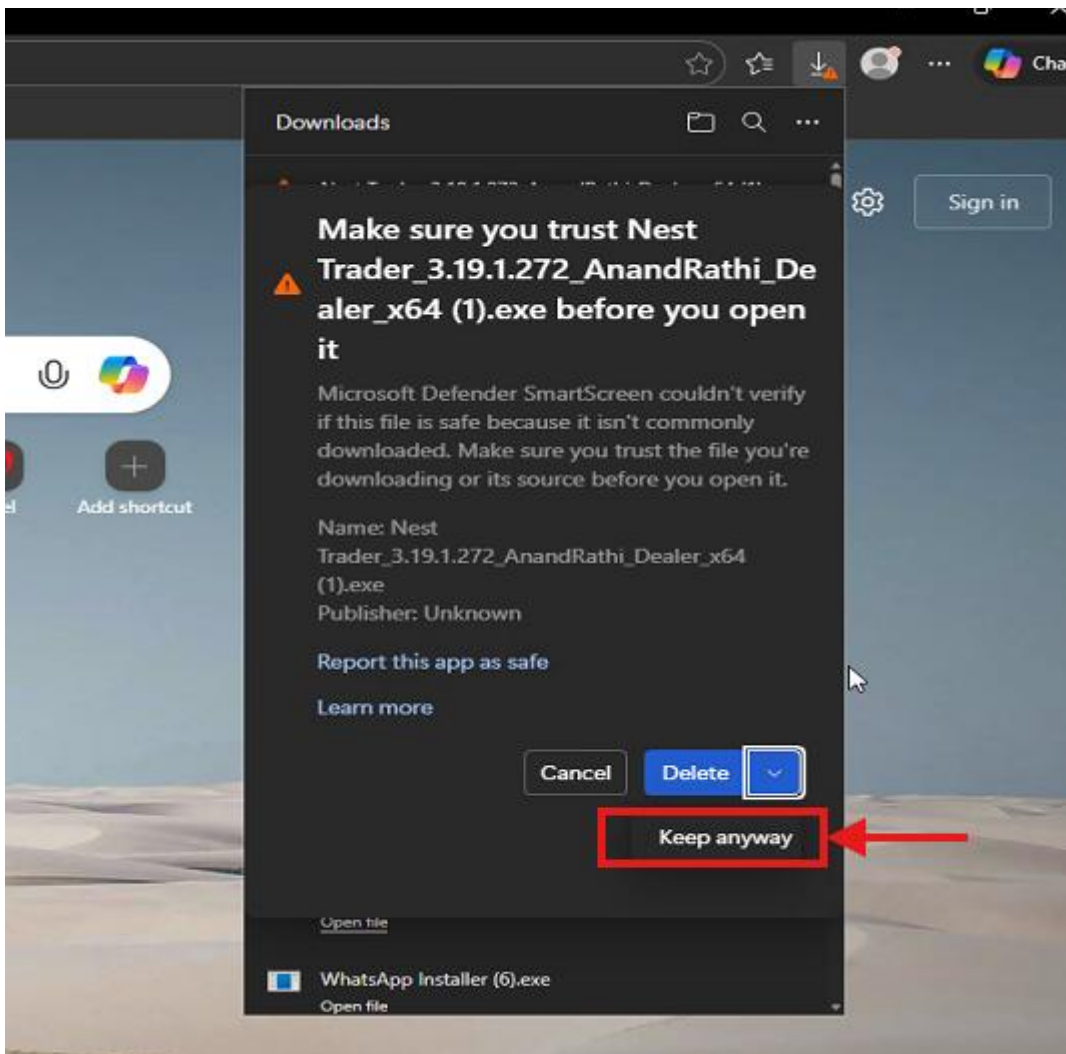
5. click on the three dots (⋮) menu.



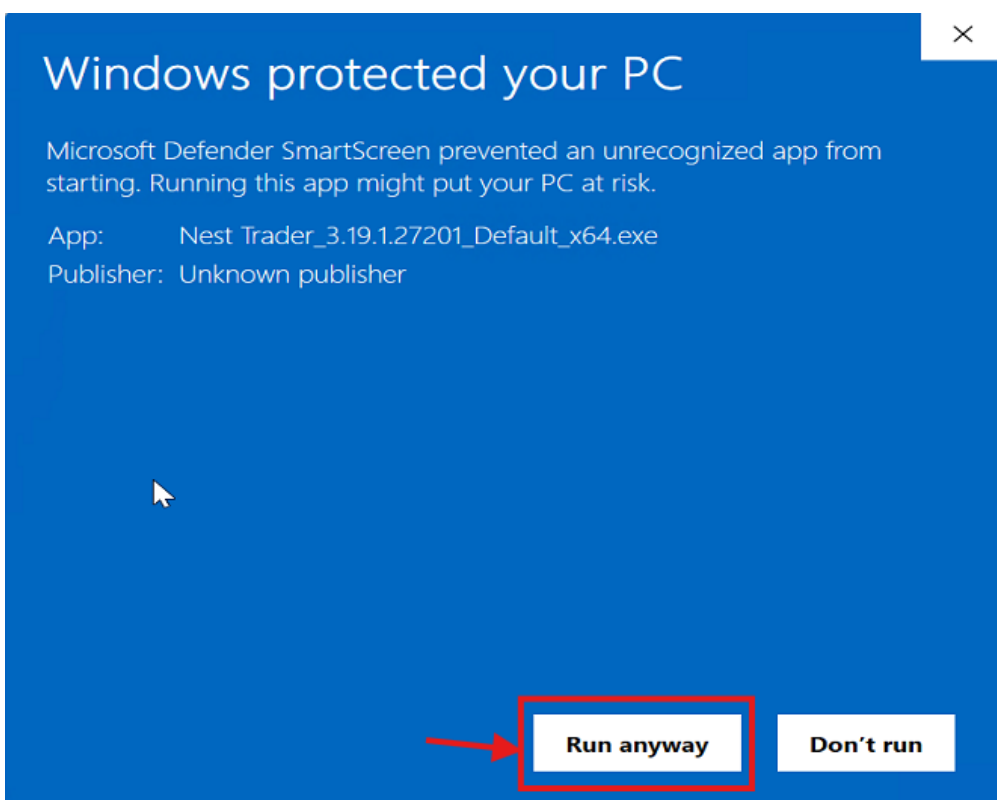
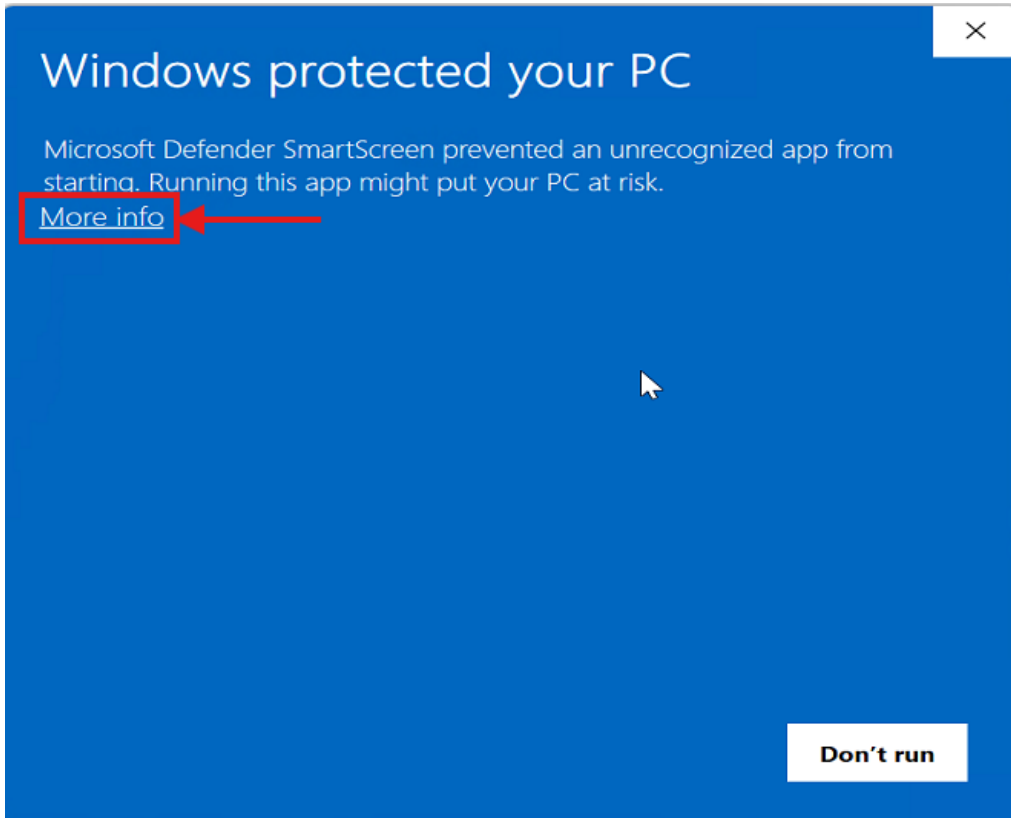
6. Select **Keep**.



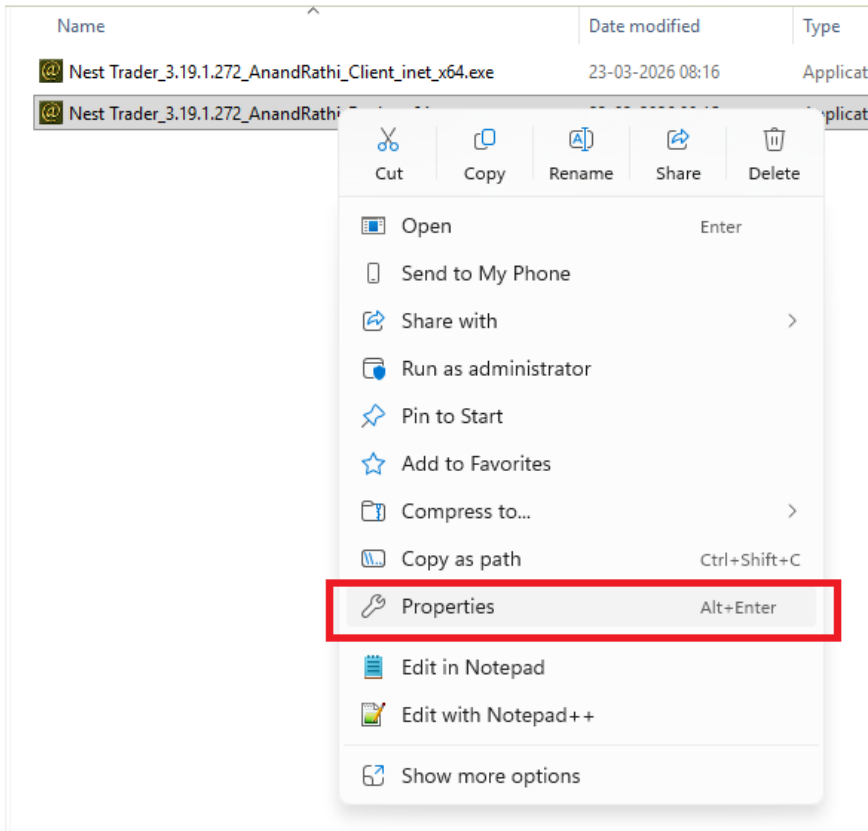
7. Then click **Keep anyway** to proceed with the download



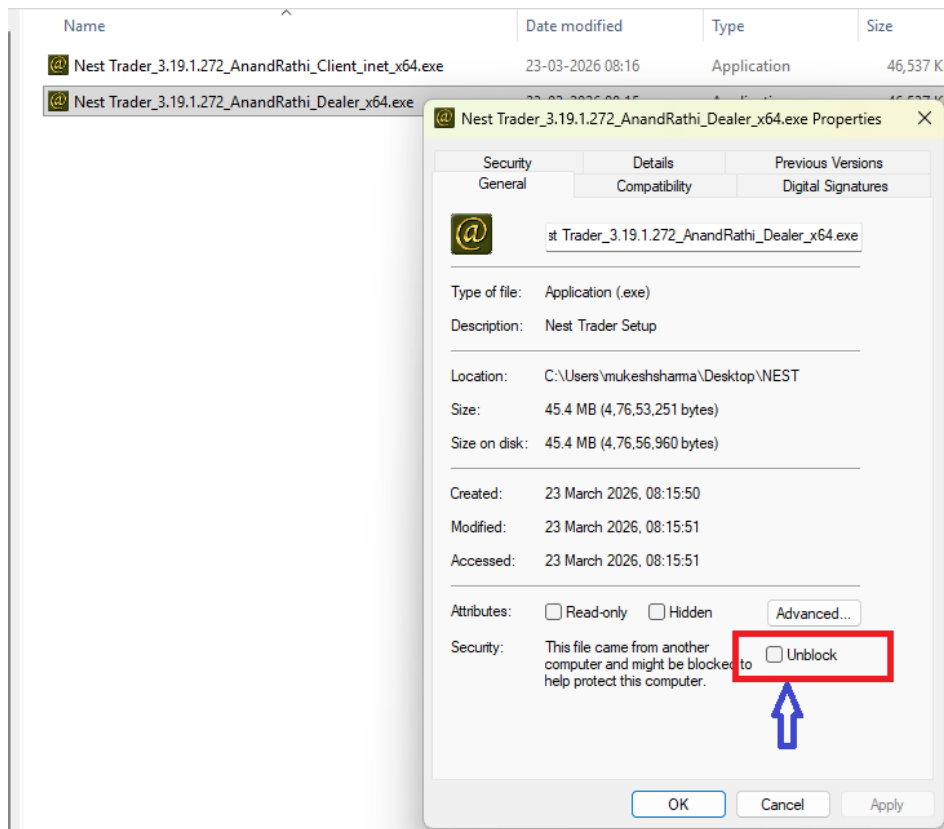
8. Install the NEST exe. If a Windows Protected message appears, click on **More info** and then select **Run anyway**. Run the application with administrator rights..



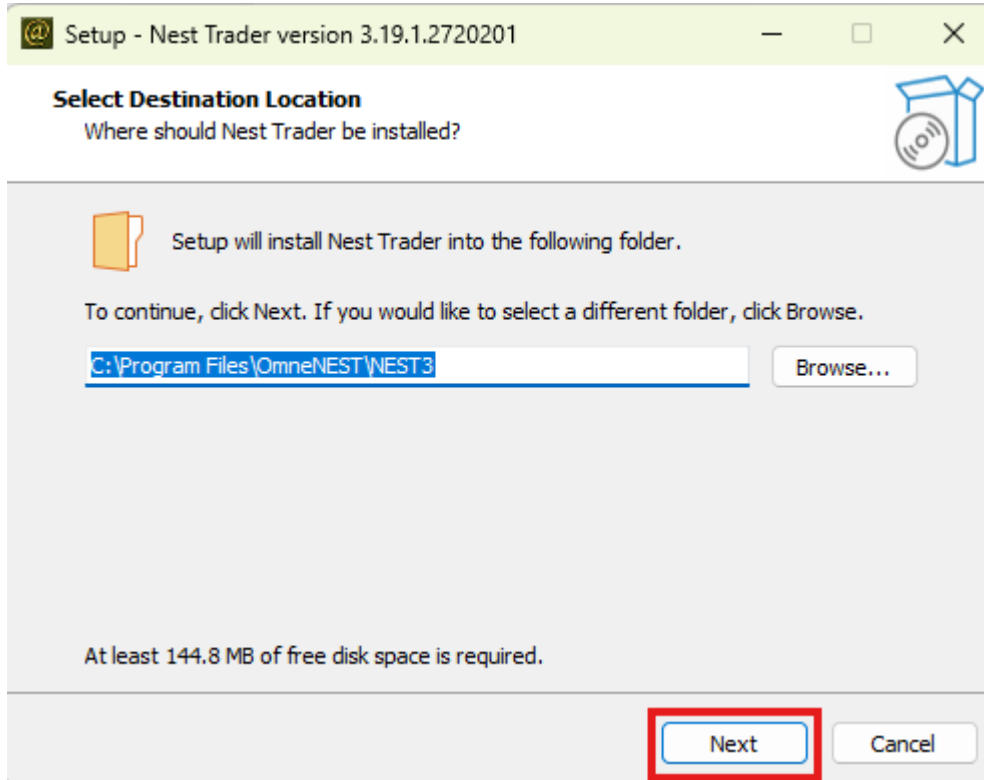
9. Right click on downloaded “Nest Trader_3.19.1.272_anandrathi_*****_inet_x64.exe’ and click on Properties.



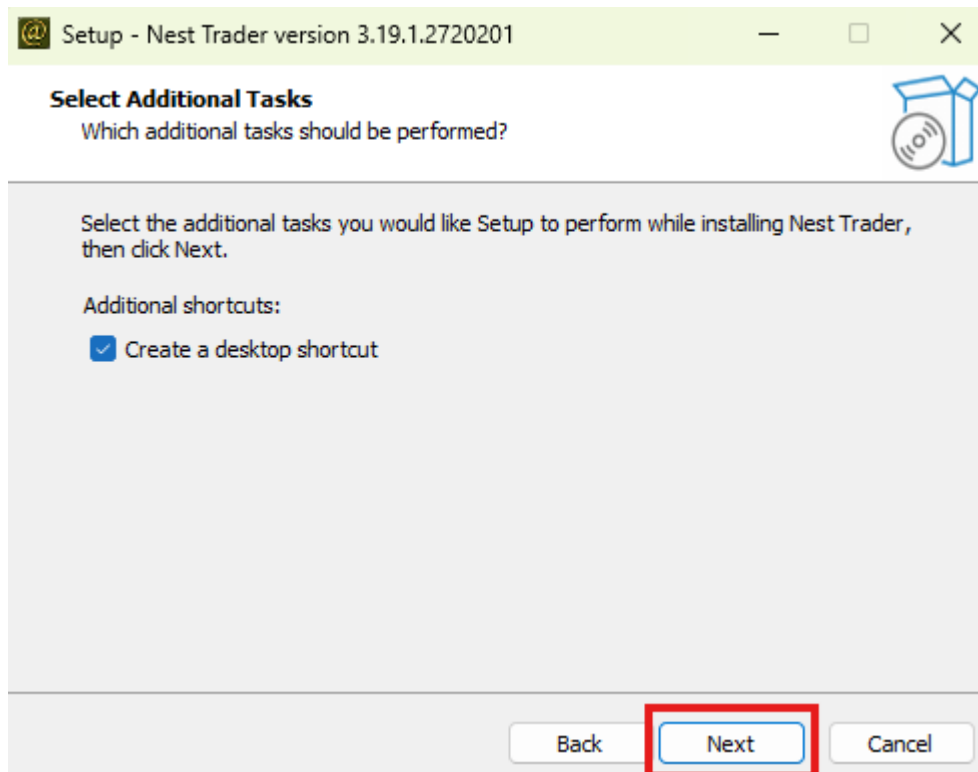
10. Tick on unblocked > Apply > OK.



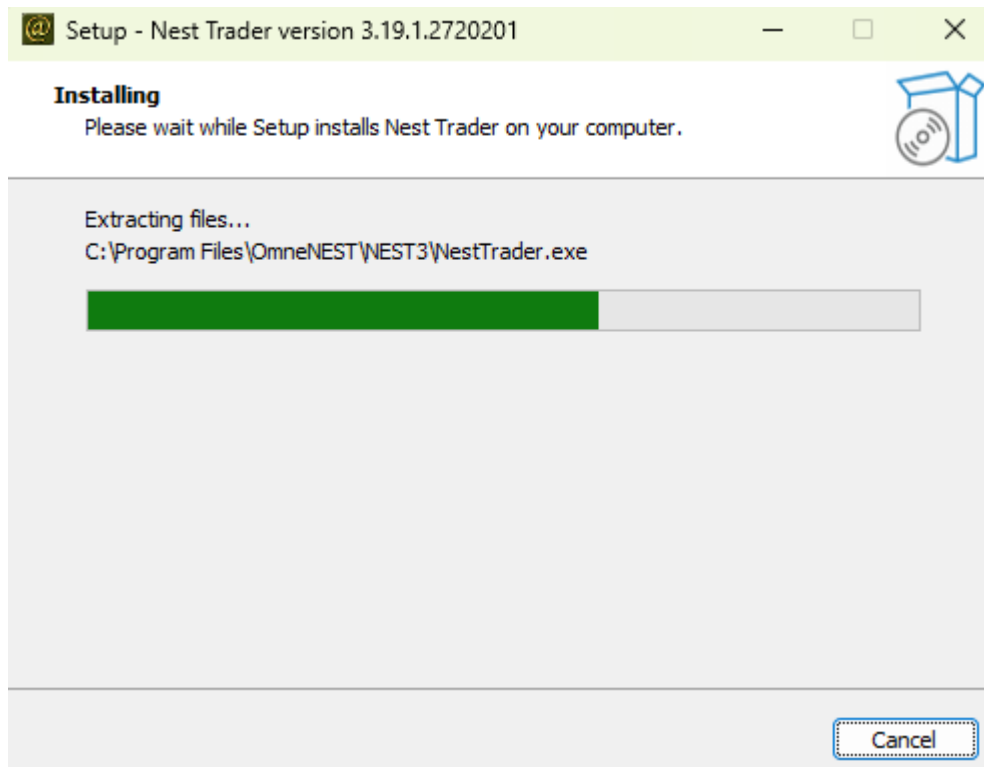
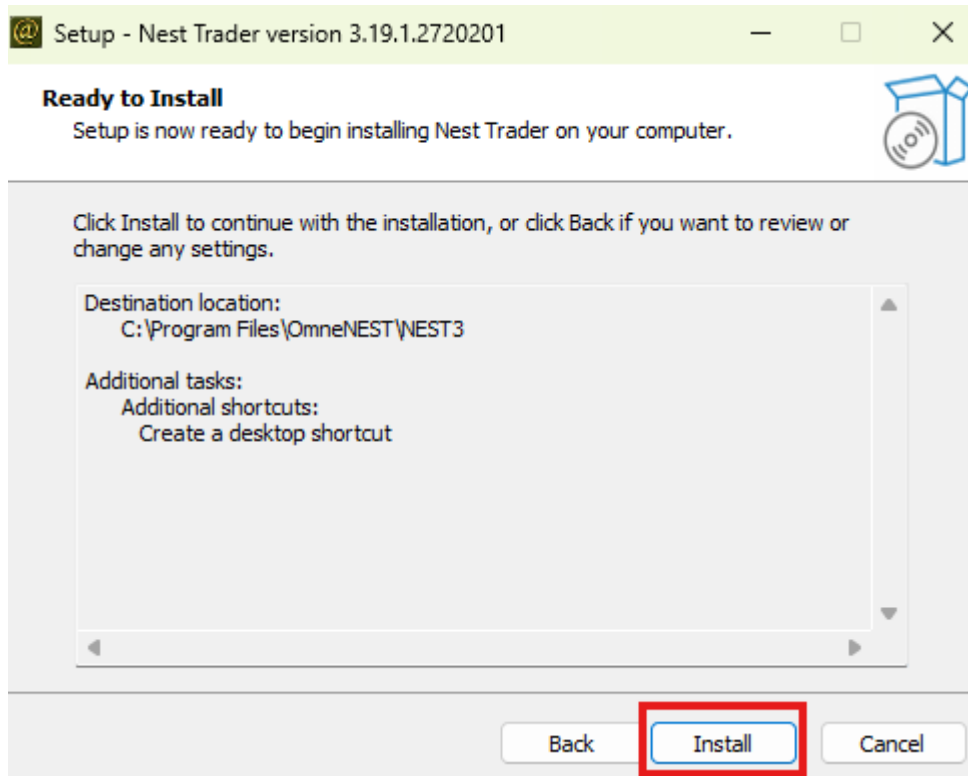
11. Install nest exe click on next.



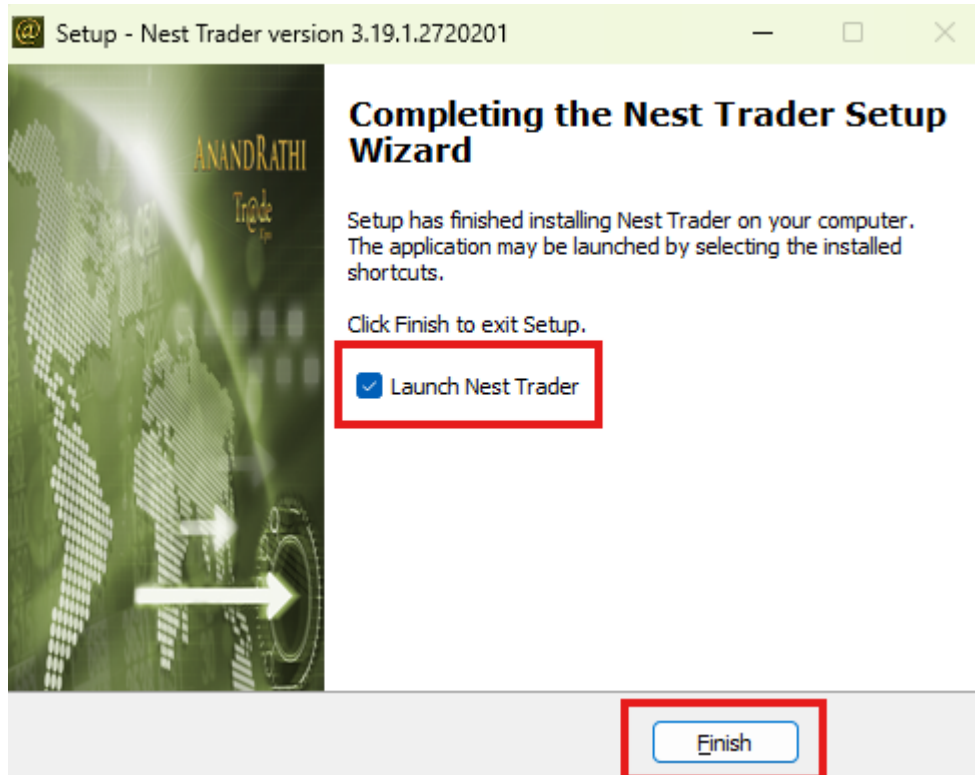
12. Click on **Next**.



13. Click on **Install**.



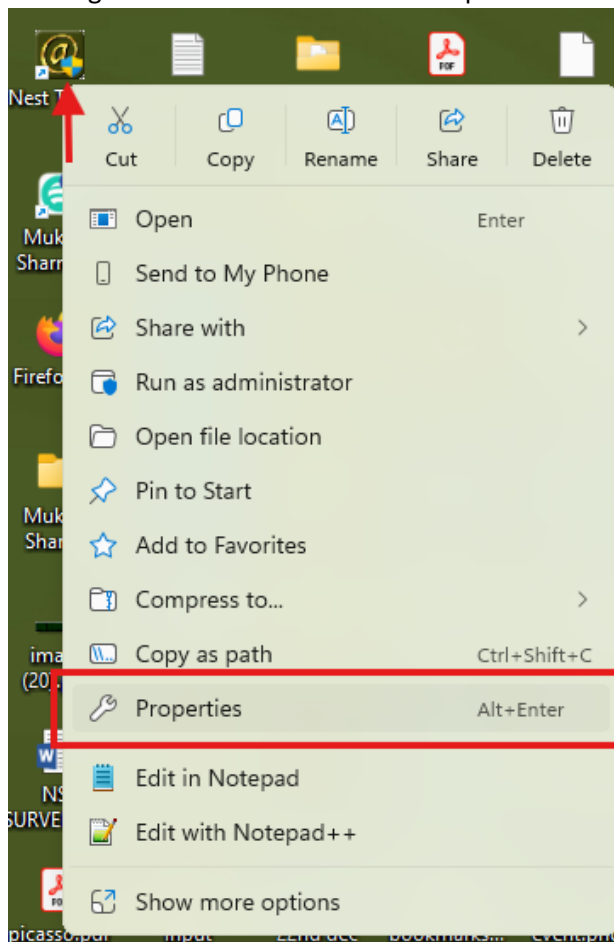
14. Uncheck **Launch Nest Trader** and **Finish**.



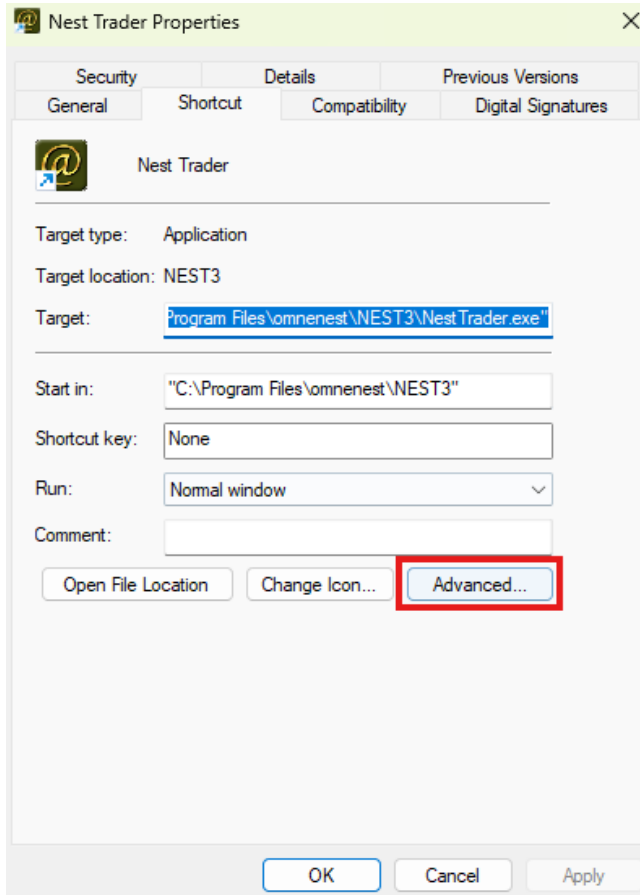
15. After installing exe, give the administrator rights.

Stapes for given administrator Rights.

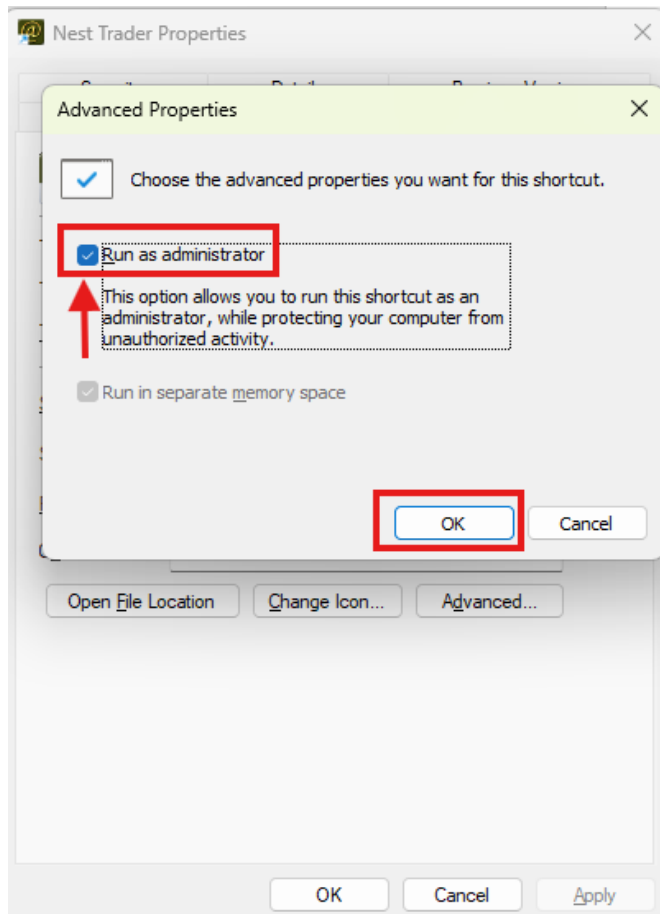
1. Right click on nest icon on Desktop. Click on **Properties**.



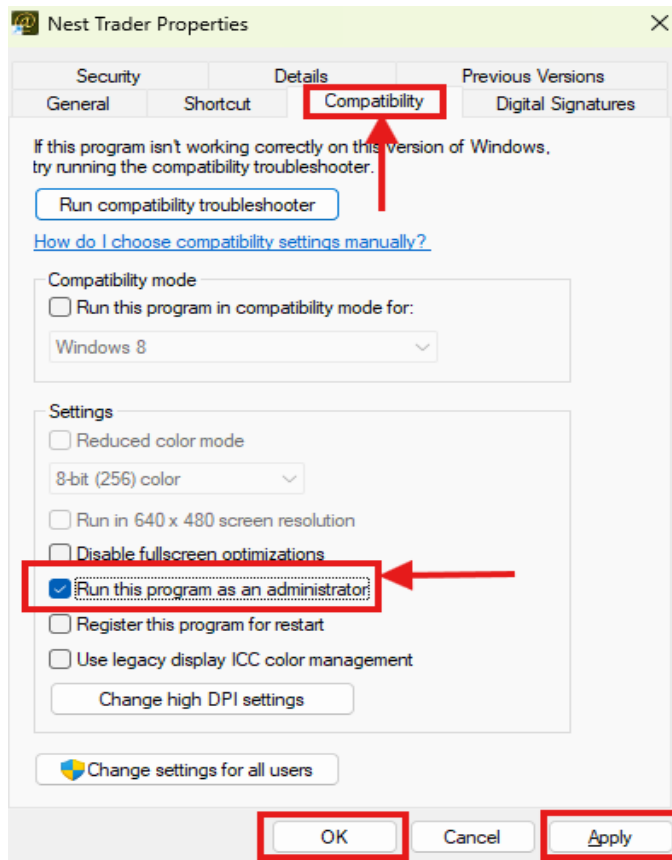
2. Click on **Advance**



3. Tick on Run as administrator > click on ok



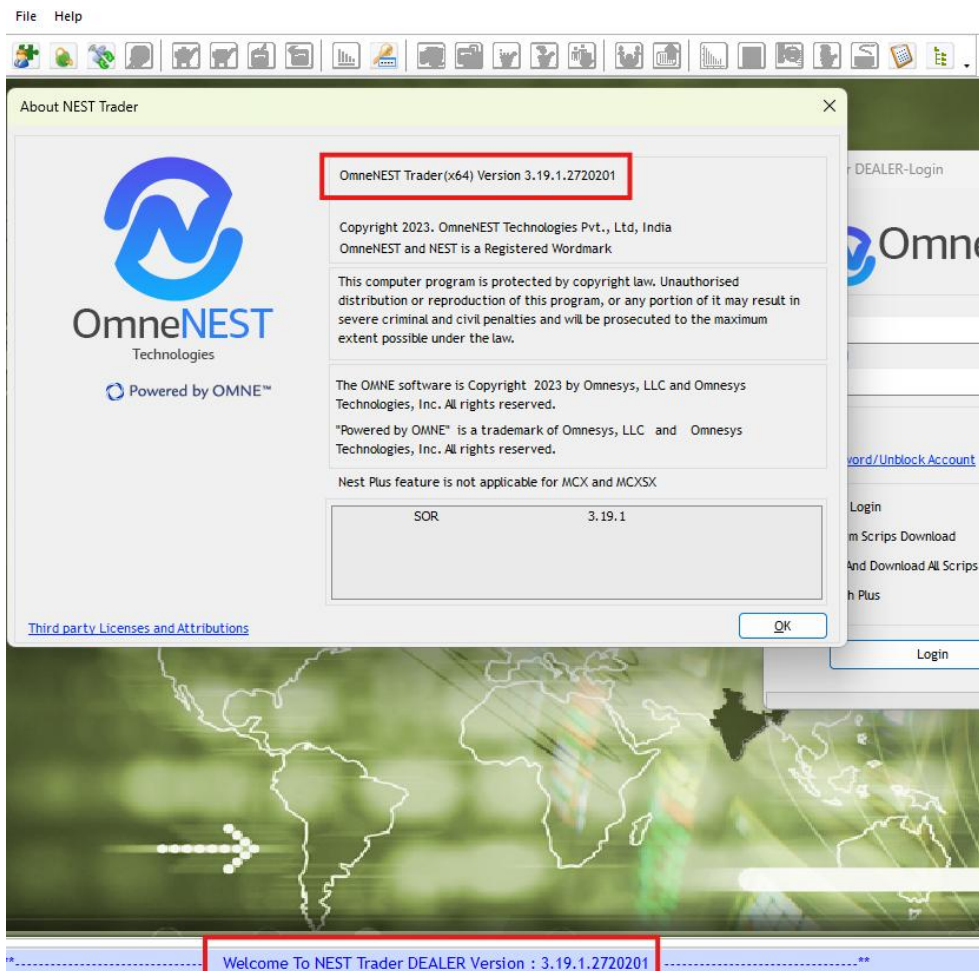
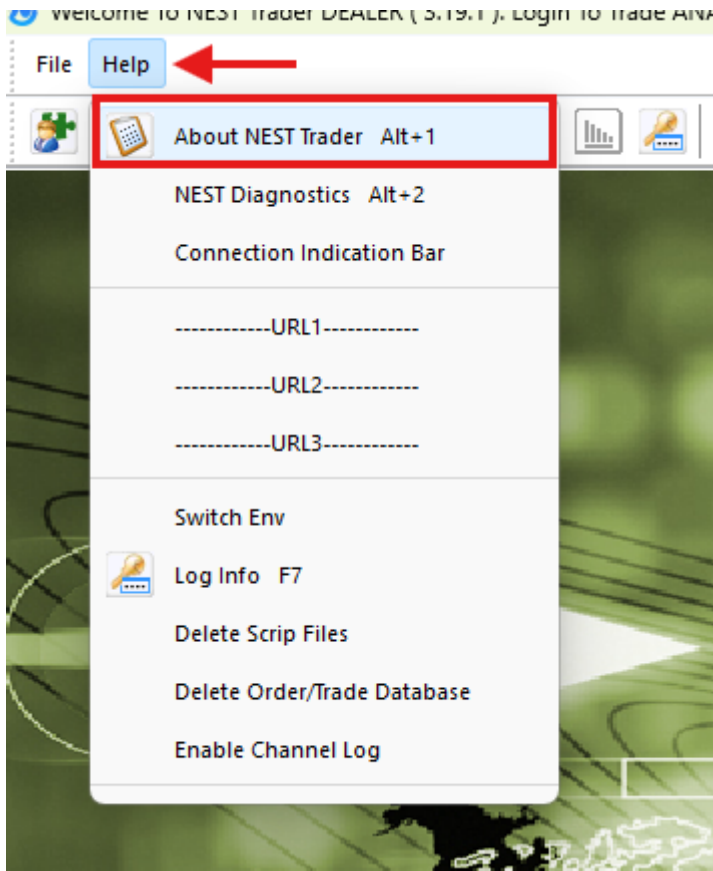
4. Go to **Compatibility** tab > Tick on **Run this program as an administrator** > click on **Apply** and **OK**



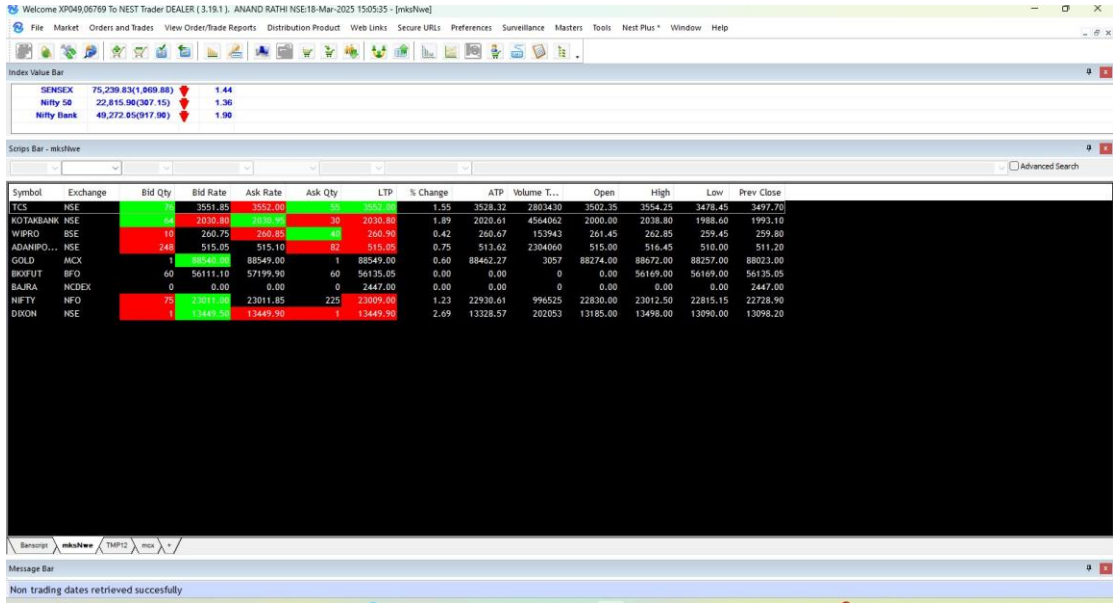
16. Open the nest exe.



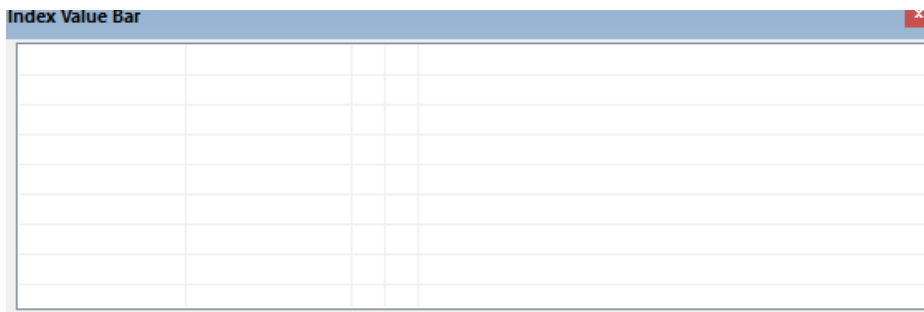
17. Check the **Version 3.19.1.2720201**



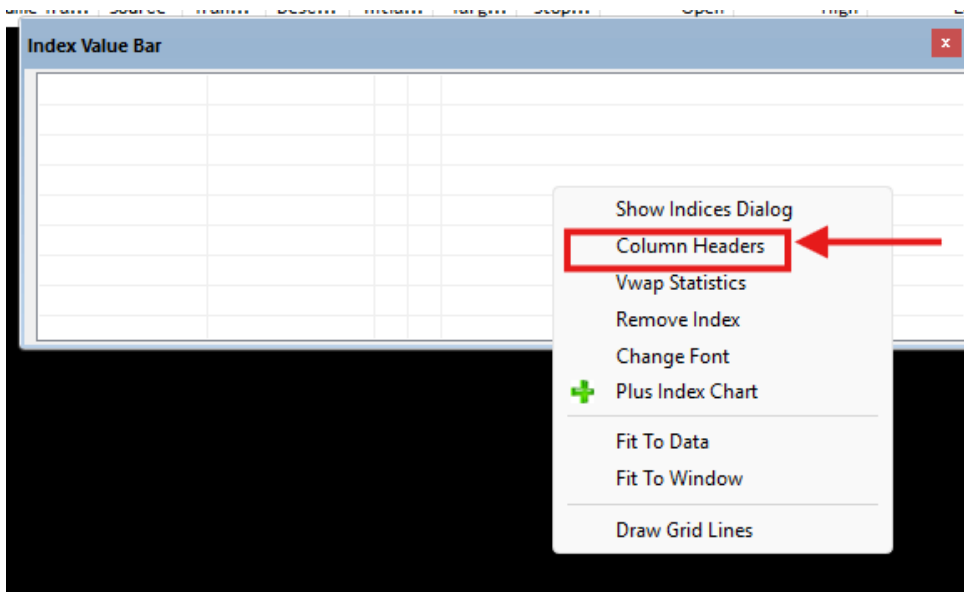
18. Final Check the login.



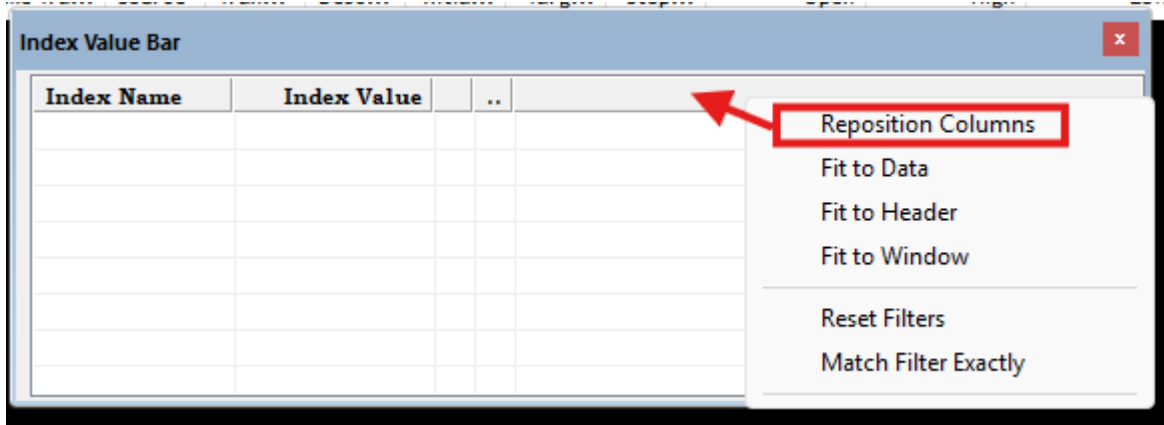
19. Press **Ctrl + I** to open the index.



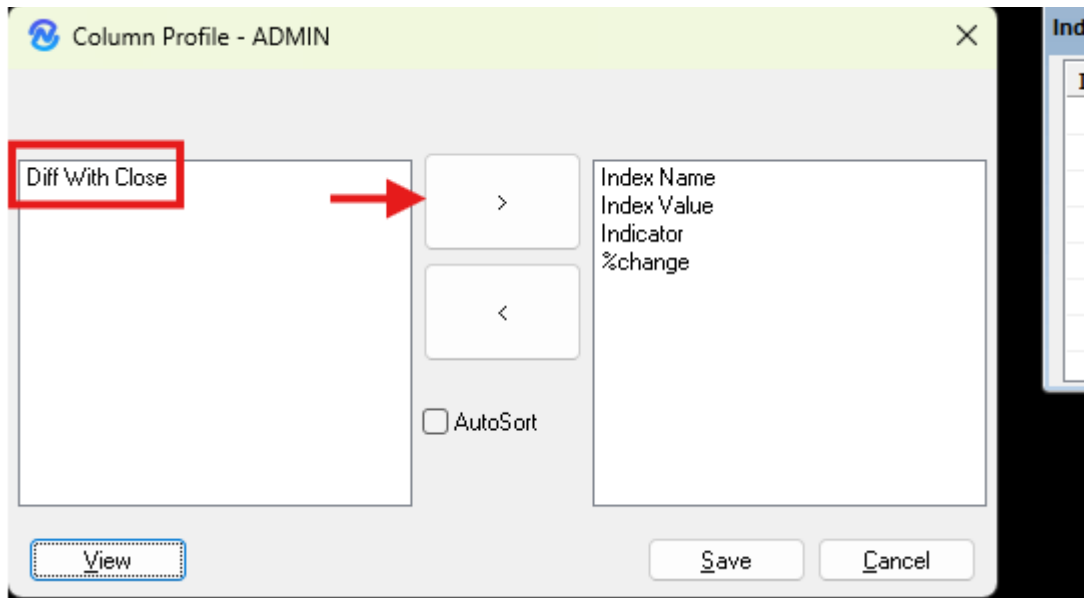
20. Right-click anywhere in the panel and select **Column Headers**.



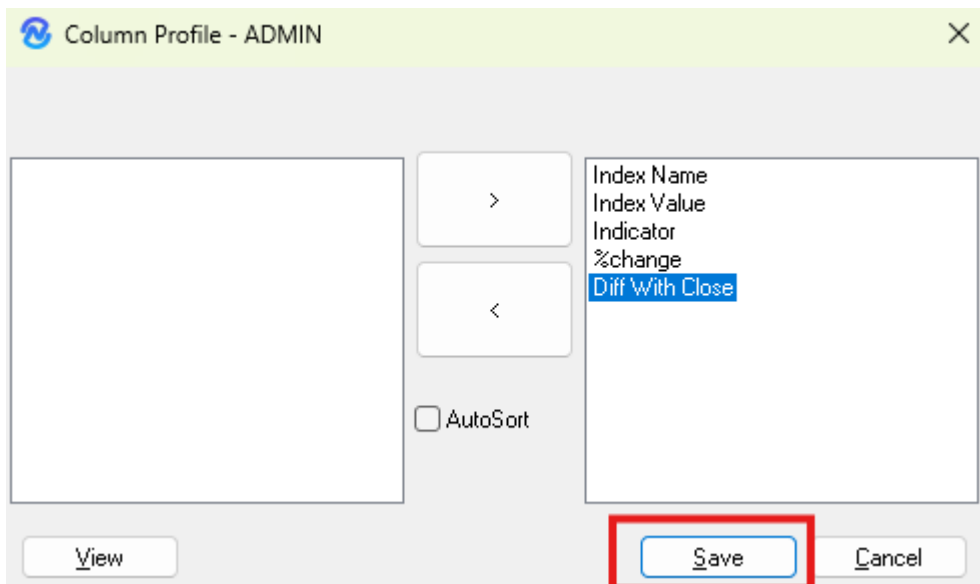
- Right-click on any column header. Click on **Reposition Columns**.



- From the left side, select **"Diff with Close"** and move it to the right side.



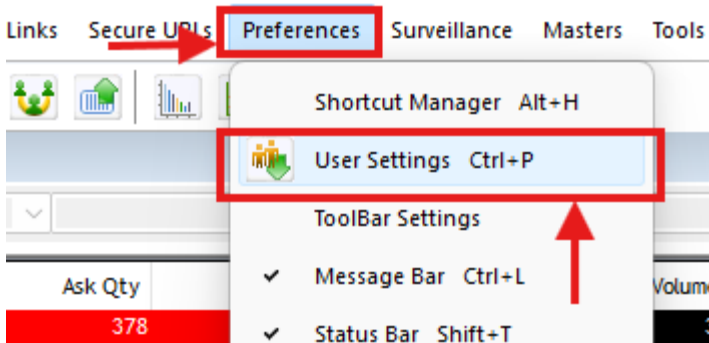
- Click **Save**.



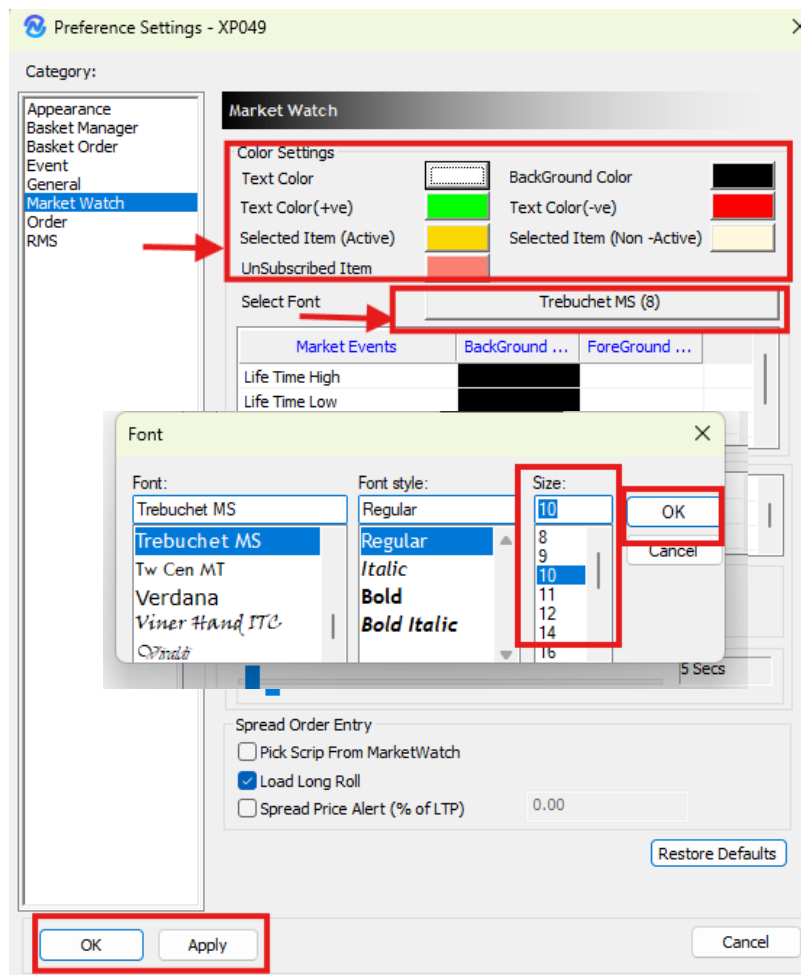
24. Rearrange the column headers as per your preference.

Index Na...	Index Va...	Indic...	%change	Diff Wit...
BSE B...	64,936.05		0.00	0.00
SENSEX	74,271.58			

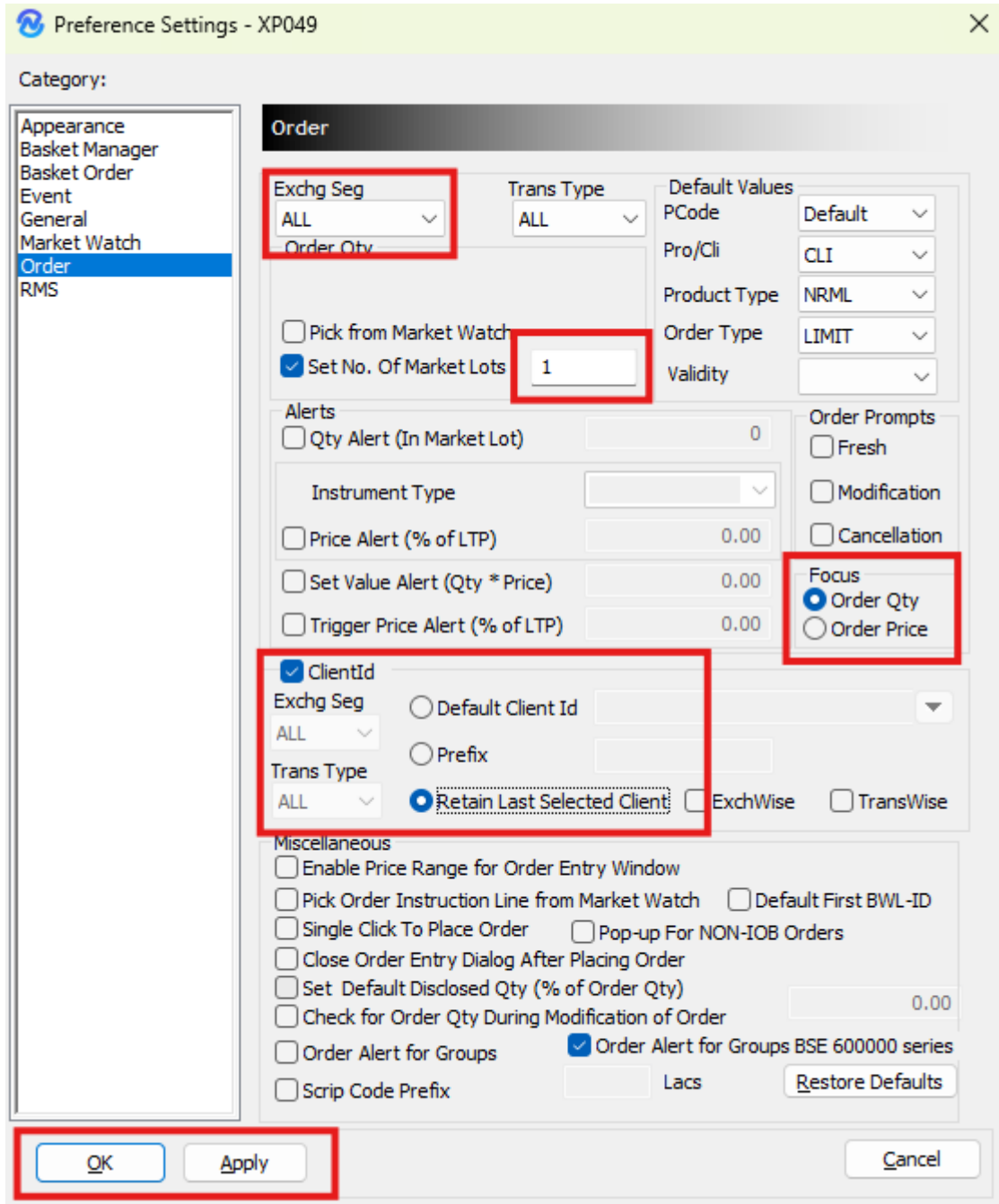
25. For Market Watch settings, go to **Preferences** and select **User Settings**.



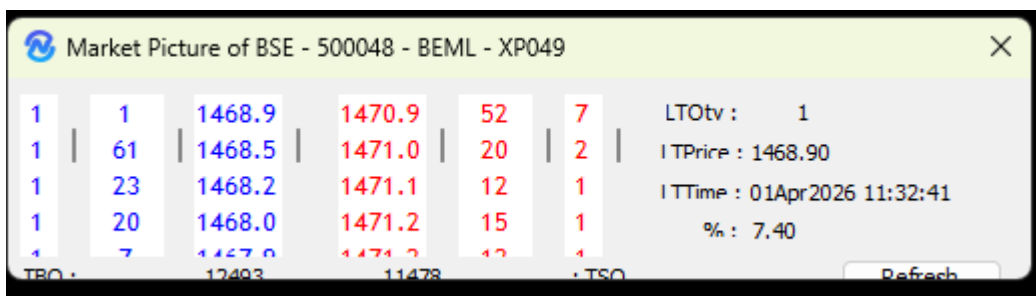
26. Go to Market Watch, Customize the color and font as per your requirements, then click **Apply** and **OK**.



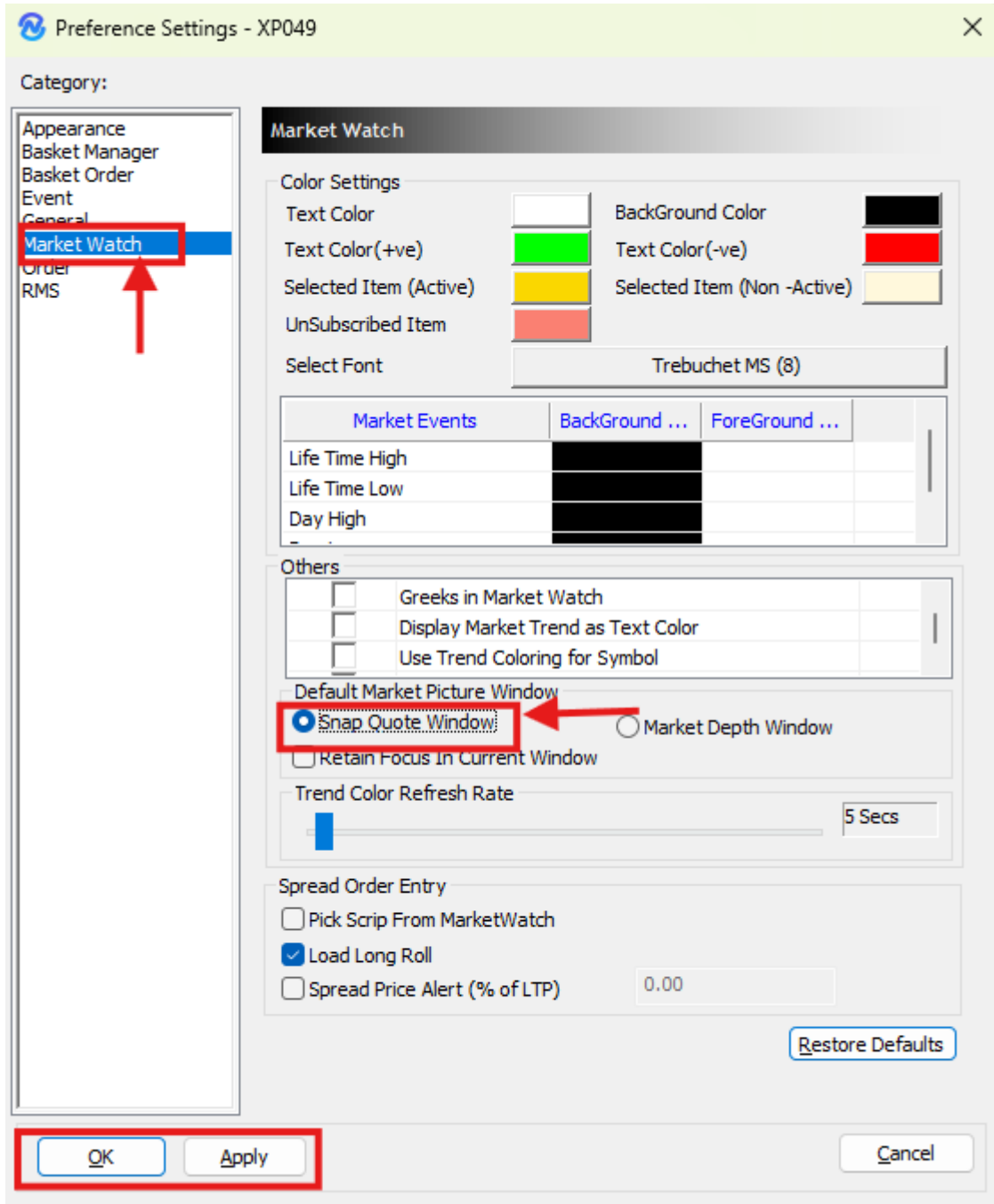
27. For Order settings, Select Order, make the necessary changes and click **Apply** and **OK**.



28. If the F6 or window screen opens in a small size, go to **Preferences** and select **User Settings**.



29. Go to **Market Watch**, check the **Snap Quote Window** option, then click **Apply** and **OK**.



30. Verify the settings.

Snap Quote of ANAND RATHI WEALTH LTD - INE463V01026 - XP049										
NSE	Normal	EQ	ANANDRATHI			Est Price :	0.00	Value :	19,14574 Crs	
1	2	3132.80	3134.80	6	2	LTQty :	1@ 3132.80	Open :	3055.00	
1	21	3132.40	3134.90	9	2	LTPY :	NA	High :	3140.00	
1	40	3132.30	3135.00	7	2	ATP :	3107.57	Low :	3050.00	
1	10	3131.60	3135.10	1	1	Volume :	61610	Close :	3035.40	
1	3	3131.40	3135.20	1	1	% Chg :	3.21	Low Ckt Lim :	2428.40	
TBQ : 13910						7256	: TSQ	UndLTP :	NA	
LTT : 01Apr2026 11:42:46						LUT : 01-Apr-2026 11:42:46		Net Chg :	97.40	
CR Rating : 2428.40-3642.40						Periodic Call Auction : NA		Todays Close Price : NA		
Low LPP :		0.00		High LPP :		0.00		Settlement Type :		T+1
Indicative close Price :		0.00		Call Auction Cancelled Buy Quantity :		0		Call Auction Cancelled Sell Quantity :		0
Call Auction Cancelled Buy Orders :		0		Call Auction Cancelled Sell Orders :		0		Call Auction Indicator :		NA
Qty :	B-ATP :	S-ATP :	Value :	Gain/Loss :	MTM :	OverAll-MTM :				

Summary of Keyboard Shortcuts

Shortcut Key	Function
Ctrl + H	To get list of Keyboard Shortcuts
F1 / (+)	Buy Order Entry
F2 / (-)	Sell Order entry
F4	To get Market Watch window.
F3	To get Order Book Window. Order book gives complete details of Order placed from system like Client Code, Exchange, Order No., Trading Symbol, Buy / Sell, Traded Qty, Pending Qty, Status of Order etc.
F8	To get Trade Book Window. Trade book gives complete details of traded orders like Client Code, Exchange, Trade No., Trading Symbol, Buy / Sell, Traded Qty, Status of Order etc.
Ctrl + F	To get filter in Order Book, Trade Book and Net Positions
Alt + F6	To get Net Position window Day-wise and Net-wise. By default the net position displays Day-wise positions. By selecting the Net-wise option, you can view the carry forward positions along with day-wise positions.
F7	Activity Log – It shows all messages time wise.
Ctrl + D	To get Derivative chain by selecting NSE Scrip under Market Watch.
F6	To get Snap Quote window (Best five Buy and Sell price along with Open, High, Low and Price Range etc..)
F9	Login to NEST Trader system
F10	Logout from NEST Trader system
Ctrl + Alt + F6	To get Combined Market Depth window.
Ctrl + Shift + H	To get Hourly and Five Minute Statistics
Shift + O	Option calculator
F5	To get Option Instrument Implied Volatility
Ctrl – K	To get Ticker Bar
Shift + E	Export to Excel

Login on to NEST Trader

1. Double click the NEST Trader Icon on your desktop to start the application. At the logon screen enter your login name and password and click 'Login'.
2. Click on the 'Continue' button after selecting the relevant exchange segments to proceed with Scrip Download at the login window. If you do not check any of the segments then the scrip master will be loaded from the existing file for that segment.
3. On successful login the system will prompt 'User logged in Successfully'.

Changing your Password

If you are logging on for the first time, the system will prompt you to change your **login password** and **transaction password** (The transaction password needs to be entered while you do any transactions post login).

The password should be alphanumerical and should be 6 to 12 characters in length. Please note that you cannot set a password that is same as last two passwords.

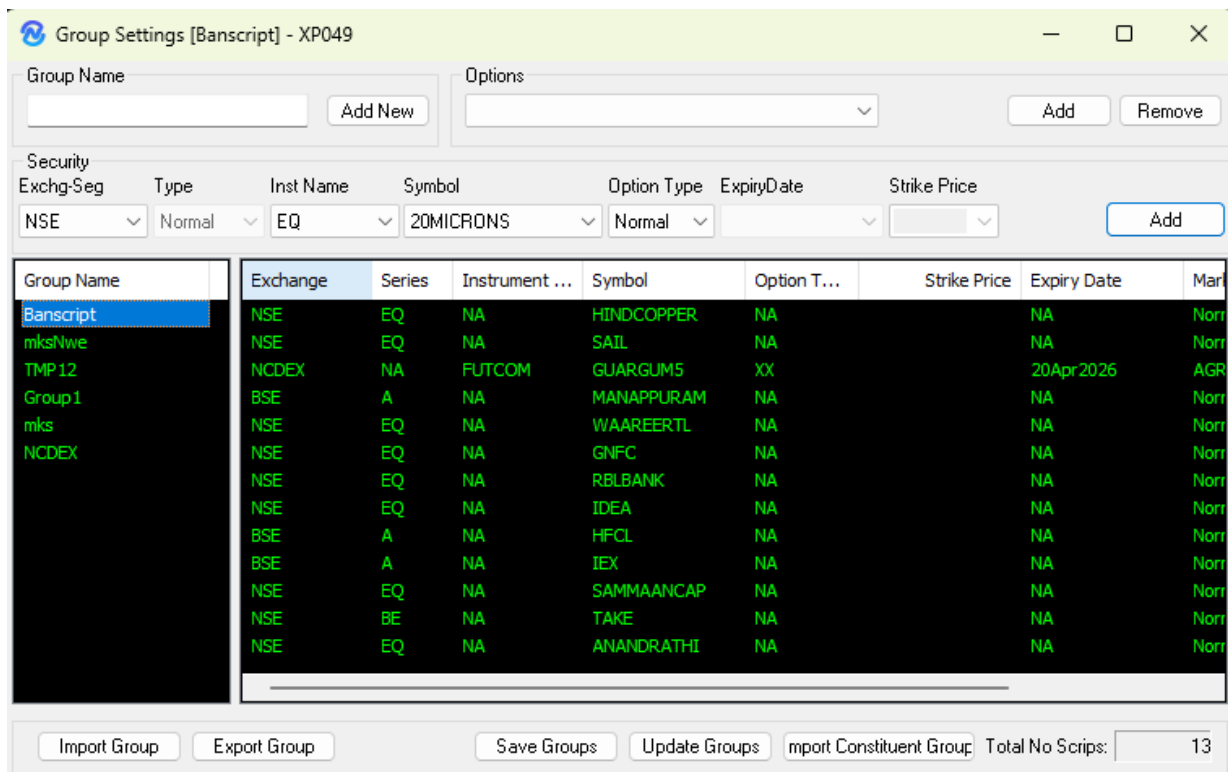
If you enter wrong or incorrect password 3 times, your ID will be blocked and to reset your password, please ensure that you call or email RMS or CTCL departments.

The system mandates that you change the login password and transaction password every 14 days.

Creating your Market Watch:

(Market>Market Watch Profile)

You can create portfolio or market watch from Market Watch Group settings dialog option under the menu Market. The following dialog box will appear:



In the dialog box, enter a **Group Name** and click on **'Add New'** button.

Adding individual securities to your group (all segments)

In the above Group Settings dialog box, under 'Security' select the relevant options i.e. Exchange Segment, Instrument, Symbol etc. and click 'Add' to add the selected security to your market watch group.

Please ensure that once the scrips are selected click **'Save Groups'** and **'Update Groups'** before closing the window. **This will save your market watch scrips.**

Adding predefined securities to your group

In the Group Settings dialog box, using 'Options', you can add derivative symbols at one shot. The various options provided are:

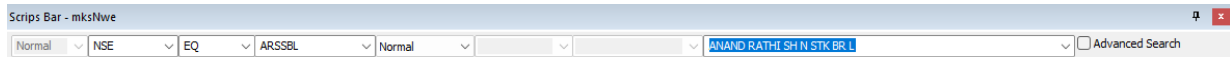
- All future securities for the selected expiry
- All option securities for the selected expiry (for selected scrip selected expiry)
- All option securities for the selection (for selected scrip across expiries)
- All underlying scrip for futures (Cash Underlying)

- All securities for selected market type (for NCDEX)

While adding future symbols using above-mentioned options you have to **select the proper expiry**.

Subsequently adding Scrips into existing Market Watch:

You can add scrips to market watch from scrip bar, which present on the top of the market watch. Once you call “**CTRL+S**” from market watch, the focus will be on scrip bar.



In scrip bar, there is field, which consists of all company names. Once you type the company name the respective security symbol will be selected and you add it to market watch. You cannot add same scrip more than once in a particular market watch group. If you try to add the scrip in the same market watch, it will give you a message saying “Scrip already present” and the focus will be on that scrip in the market watch. After adding scrip in market watch you can go to market watch group settings -> Save Groups.

Once you add scrip to market watch you can arrange them in an order by drag and drop through mouse click or CTRL+X (Cut) and CTRL+V (Paste). To save this order you have to say CTRL+M or Set as default order list from right-click on market watch -> Actions. If you want to move back to the original order you can call Load default order list (CTRL+N), which recalls the last saved order.

You can search scrip in market watch by typing the initial of the scrip and then pressing CTRL button. You can use CTRL for next scrip search and SHIFT+CTRL for previous scrip.

Market Watch Column Settings:

You can rearrange the market watch columns from “**Repositions Column**” option available on doing right click on market watch profile header (where you can see all the labels like exchange, symbol, best buy rate, etc.). From this dialog, you can select the columns you want to keep in market watch and click on save button.

Market Watch Actions

From market watch, you can view the rates for the scrip added. You can call market depth dialog (**F6**), order entry (**F1/F2**), Order Book (**F3**), Trade Book (**F8**), Net position (**Alt + F6**) Alerts and Charts by selecting particular scrip in market watch.

The market depth dialog shows the best-five information and other trade statistics. Order Entry is the screen from where you can place orders to the exchange. You can call this screen using F1/F2 or +/-, where F1/+ for Buy order entry and F2/- for Sell order entry. In order book and trade book, you can view the orders and trades information for the trading day

Broadcast Information:

For all NSE symbols the broadcast is auto refresh and you cannot query exchange for refresh. Where as in BSE you can query exchange for refresh. Once you say F5 or clicking on Display button in Market Depth (Snap Quote) dialog, you will get the latest broadcast information for selected scrip.

Preferences:

From Preferences (CTRL+P) -> Market Watch Settings category, you can set the color and font settings, default market watch group in market watch.

The color and font settings in other NT dialogs can be changed from **Preferences -> User Settings** category. You can set default settings across dialogs or different settings for different dialogs.

Order Prompt->In preferences -> Order category, under order prompts, you can select the exchange segment and uncheck the cancel option. From here, if you want to set prompts you can check the respective selection (Fresh, Modify, Cancel).

Product Tag ->In NEST Trader, there are two different product types. Before placing an order you have to select this product tag and place the order. The products present in trader are NRML (Normal Margin) and MIS (Margin Intraday Square-off). In preferences -> Order category, under Default values from product type, you can select the product type and apply. When you call the order entry dialog, the default product will be selected.

Order Type->In preferences -> Order category, under Default values from Order type you can select the order type and apply. When you call the order entry dialog, the default order type will be selected.

Default order quantity ->In preferences -> Order category, under Order Quantity you can select the default order quantity selection type and apply. There are two options.

Pick from market watch: When you set this option, the order entry dialog picks whatever the quantity available on the opposite side in the top best rate.

Set No. of market lots: Here you can define how much quantity the order entry dialog should pick by default. For derivatives it will be in no. of lots.

The default order quantity can be set at every exchange segment level. At the trader level, you can set the alerts for single order quantity, price and value limits. Whenever the single order field value exceeds these limits, it will give a prompt to submit the order or not. Quantity alerts should be in terms of lot size, price alert is based on the percentage of LTP.

Day Price Range: When you check "Enable Price range for order entry window" option, while placing the order, the trader will check for the circuit limits (Daily Price Range) for the scrip. In normal scenario, if you place the order outside circuit limits the order will be freeze. So this option rules out the possibility of order freeze.

If you want the order entry dialog to pick the derivative lot size for cash scrip order, you can set "Pick Derivative market lot for cash scrip".

When you are modifying an open order, and simultaneously if partial quantity executed, then the modification request that you will be sending to exchange will be rejected. So if you select "Check for order quantity during modification of order", in these cases, while modifying an order, you will receive a popup saying that "The order is updated. Continue Anyway?" If you say yes, the modify request will be sent to exchange otherwise the modification will be cancelled.

You can view the indices in index bar placed on the top of market watch. If you click on the IW button present on indices bar, you can view all the indices present and the respective values. By doing right click selecting any index and saying set as first index, you can set the selected index as default first index to view in index bar. At any point of time you can view two indices from index bar.

Charts:

There are two types of charts available in NEST Trader.

1. Intraday Graph, which depicts the intraday chart for selected scrip from market. This can be called from Intraday Chart option on right click menu on market watch.
2. OHLC Graph, also an intraday graph which depicts the charts based on VWAP (Volume Weighted Average Price) at any point of time.

Scrip Information:

You can view the scrip properties / information of the selected scrip in market watch by calling SHIFT+F7 or right click menu -> Tools -> Scrip Properties

Hourly Statistics:

You can view the hourly as well as Five minutes statistics for scrip using Hourly statistics option under Market menu. You can view Open, High, Low, Close, Volume and VWAP (Volume Weighted Average Price) for every one hour. Also you can view the top-ten and bottom-ten scrip in terms of Trade Volume, Open Interest volume, Open Interest value and Percentage Change.

Implied Volatility:

NEST Trader has the feature of displaying live implied volatility for all option contracts. Also you can use option calculator (Right Click Menu on Market Watch -> Tools -> Option Calculator) to calculate the fair price of option and implied volatility

Derivative Chain:

By selecting a derivative security and calling derivatives chain from market watch, will display all the derivative contracts (futures and options with all strikes across expiries) including underlying scrip. You can save this as a different market watch profile too.

Combined Market Depth:

The combined market depth features displays the combined market depth of NSE and BSE cash market. This market depth combines top five bids and offers of both NSE and BSE on basis of BID / ASK prices, which results in top 10 bids and offers.

Compare Scrip:

The Compare scrip feature is for comparing scrip based on the different market data columns available. You can formulate the strategy using the scrip present in market watch, the market parameters and the arithmetic & logical operators. Once you formulate the strategy the live values for the same can be observed in Scrip comparison bar.

The User Defined column is a customized column that can be added in market watch with all the columns available in market watch and the arithmetic & logical operators. With the added column you can view the live values based on the broadcast.

Display Heat map:

Display Heat map is a feature to view the percentage change of all symbols present in specific market watch in ascending or descending order.

Order Book (F3) Window:

Once you submitted the order from NEST Trader the order will be validated by the internal risk management system and then it will be sent to exchange and the confirmation will be placed on trader.

Various order status messages that can be observed under order book are as follows:

- Put Order Request Received (After order acknowledged by server)
- Validation Pending (Order is going through risk validations)
- Open Pending (Order sent to Exchange)
- Open (Order confirmed by exchange)
- Modify Validation Pending (Order modification is going through risk validation)
- Modify Pending (Order Modification request sent to exchange)
- Modified (Order Modification confirmed by exchange)
- Not Modified (Order Modification rejected by exchange)
- Cancel Pending (Order Cancel request sent to exchange) - Cancelled (Order Cancellation confirmed by exchange)
- Not Cancelled (Order Cancellation rejected by exchange)
- Rejected (Order Rejected by exchange)
- Order Frozen (Order frozen at exchange)
- Lapsed (Order lapsed at application server level due to exchange disconnection)

When you call the order book from market watch selecting scrip, the order book by default filters the orders for that scrip only. If you call F3 twice then the order book will display all the orders.

If you want to view all order orders on single F3, you can check "Display orders without context" option present on the top of order book.

If the order got rejected, the respective rejection reason will be displayed in the rejection reason column in the completed orders part in the order book.

Position Conversion:

"Position conversion" option in trade book is for conversion of trade from one product to another. If you placed the order in MIS (For Intraday) product instead of NRML (Normal Margin) and if the order got executed, then you can convert the trade from MIS to NRML, to exclude from squaring off the position at the end of the trading session.

Net Position:

You can view the positions in Net Position dialog (ALT+F6). You can filter the positions by clicking on Change Filter button and then selecting the filter level.

By default the net position displays Day-wise positions. By selecting the Net-wise option, you can view the carry forward positions and day-wise positions.

In net position dialog, you can view the live MTM value for every position and also the net MTM will be shown at the bottom of the dialog.

Basket Order:

You can place the basket orders using Normal Basket (CTRL+B) option. You can prepare a basket with symbols across exchange segments and with different account ids. You can select all the order parameters, add to the basket and click on the place button to place the basket. Once after you place the basket the place button will be disabled. You can click on reset button or say F5 to enable the place button.

You can save the basket using Create Basket option to excel, csv or txt format. You can also update the order parameters from the file and can import in trader using Browse option.

NEST Trader has the spread order entry feature for derivative scrip through which you can place spread, two leg and three leg orders. All spread orders are IOC (Immediate or Cancel) order.

Spread order Entry:

- Spread Order: Using spread order you can buy (sell) the current month (near month / far month) expiry and sell (buy) the near month (far month / current month) expiry by mentioning the spread that you are expecting out of the trade.
- Two leg and three leg orders: In these orders, you need to mention the order quantity and price for each leg selected.

The spread order information and status is displayed in Spread Order report.

AMO:

You can place the after market orders from After Market Order Entry dialog present under After Market Orders menu item in Market Menu. You can even place a basket order for after market orders.

Option Exercise:

You can exercise the options from Ex/Del option present under orders and trades menu. You can select the respective fields and submit the exercise order to exchange.

RMS Limit:

The risk limits can be viewed from RMS view limits option present under Surveillance -> RMS Limits. You can view the cash margin available / ledger balance, the exposure limits and the margin utilized.

Online Back-up:

The trade report can be generated from View report option present under Masters -> Report Generation. You have to select the exchange segment, client id and the respective report format. You have to mention the file location from Browse button and on clicking on Generate report; the trade report will be generated in the mentioned location.

Message Bar:

You can view the exchange news messages in the Message bar -> **News tab**. The Message bar is located below the market watch.

In Message bar, there are different tabs. In **Session tab**, all the session messages such as login sequence, orders and trades log and other events information. In **Orders / Trades tab**, only the orders and trades log will be shown. The News tab updates the **live news messages (live market calls from AnandRathi is flashed in this Tab)** across exchanges. The messages tab displays all the messages received from ADMIN

Activity Log:

The log messages display the messages in between the login session. If you re-login to the trader you will not get the previous orders and trades messages. You can retrieve the same from server using "Get log messages" option from file menu.

Scrip Alert:

From market watch right click menu you can call the set security alert dialog through which you can set index alerts and security alerts based on market data.

Important Notes:

In NEST Trader you can filter in order book, trade book and net positions by calling **CTRL+F**. You can filter across the columns present in the dialog.

Across all NEST Trader dialogs, there is an option "Write to excel" through which you can export all the data in the respective dialogs to an excel sheet.